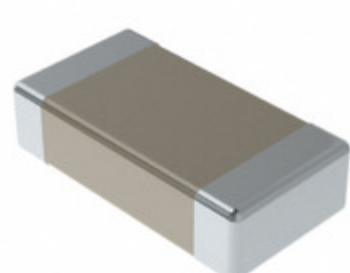


C1206X162J3HACAUTO



Part Number: C1206X162J3HACAUTO
Manufacturer: KEMET
Description: CAP CER 1206 1.6NF 25V ULTRA STA
Data sheet: [FT-CAP, Ultra Stable, X8R Dielectric](#)

RoHS Status: Lead free / RoHS Compliant
Ship From: Hong Kong
Shipment Way: DHL/Fedex/TNT/UPS/EMS

Images are for reference only.
 See Product Specifications for product details.
 Buy C1206X162J3HACAUTO with confidence from
 Component-World.HK, 1 Year Warranty

[Request For Quotation](#)

PRODUCT PARAMETER

Part Number	C1206X162J3HACAUTO	Manufacturer	KEMET
Description	CAP CER 1206 1.6NF 25V ULTRA STA	Lead Free Status / RoHS Status	Lead free / RoHS Compliant
Quantity Available	1180489 pcs	Data sheet	FT-CAP, Ultra Stable, X8R Dielectric
Category	Capacitors	Voltage - Rated	25V
Tolerance	±5%	Thickness (Max)	0.039" (0.98mm)
Temperature Coefficient	X8R	Size / Dimension	0.130" L x 0.063" W (3.30mm x 1.60mm)
Series	FT-CAP	Ratings	AEC-Q200
Packaging	Tape & Reel (TR)	Package / Case	1206 (3216 Metric)
Operating Temperature	-55°C ~ 150°C	Mounting Type	Surface Mount, MLCC
Moisture Sensitivity Level (MSL)	1 (Unlimited)	Manufacturer Standard Lead Time	36 Weeks
Lead Style	-	Lead Spacing	-
Lead Free Status / RoHS Status	Lead free / RoHS Compliant	Height - Seated (Max)	-
Features	Low ESL, Soft Termination	Failure Rate	-
Detailed Description	1600pF ±5% 25V Ceramic Capacitor X8R 1206 (3216 Metric)	Capacitance	1600pF
Applications	Automotive, Boardflex Sensitive		

Component-World.com is a Reliable Stocking Distributor of Electronic Components. We specialize in all KEMET series electronic components. We have 1180489 pieces of KEMET C1206X162J3HACAUTO in stock available now. Request a quote from electronics components distributor at Component-World.com, our sales team will contact you within 24 hours.
 RFQ Email: info@Components-World.com

RELATED PRODUCTS

	Part#: C1206X162K1HAC7800 Description: CAP CER 1206 1.6NF 100V ULTRA ST	Manufacturers: KEMET	RFQ
	Part#: C1206X162J1HACAUTO Description: CAP CER 1206 1.6NF 100V ULTRA ST	Manufacturers: KEMET	RFQ
	Part#: C1206X162G3HAC7800 Description: CAP CER 1206 1.6NF 25V ULTRA STA	Manufacturers: KEMET	RFQ
	Part#: C1206X162J4HAC7800 Description: CAP CER 1206 1.6NF 16V ULTRA STA	Manufacturers: KEMET	RFQ
	Part#: C1206X162K1HACAUTO Description: CAP CER 1206 1.6NF 100V ULTRA ST	Manufacturers: KEMET	RFQ
	Part#: C1206X162K3HAC7800 Description: CAP CER 1206 1.6NF 25V ULTRA STA	Manufacturers: KEMET	RFQ
	Part#: C1206X162G4HAC7800 Description: CAP CER 1206 1.6NF 16V ULTRA STA	Manufacturers: KEMET	RFQ
	Part#: C1206X162G5HACAUTO Description: CAP CER 1206 1.6NF 50V ULTRA STA	Manufacturers: KEMET	RFQ
	Part#: C1206X162J3HAC7800 Description: CAP CER 1206 1.6NF 25V ULTRA STA	Manufacturers: KEMET	RFQ
	Part#: C1206X162J1HAC7800 Description: CAP CER 1206 1.6NF 100V ULTRA ST	Manufacturers: KEMET	RFQ
	Part#: C1206X162J4HACAUTO Description: CAP CER 1206 1.6NF 16V ULTRA STA	Manufacturers: KEMET	RFQ
	Part#: C1206X162J8HAC7800 Description: CAP CER 1206 1.6NF 10V ULTRA STA	Manufacturers: KEMET	RFQ
	Part#: C1206X162G5HAC7800 Description: CAP CER 1206 1.6NF 50V ULTRA STA	Manufacturers: KEMET	RFQ
	Part#: C1206X162G8HAC7800 Description: CAP CER 1206 1.6NF 10V ULTRA STA	Manufacturers: KEMET	RFQ
	Part#: C1206X162G8HACAUTO Description: CAP CER 1206 1.6NF 10V ULTRA STA	Manufacturers: KEMET	RFQ
	Part#: C1206X162K3HACAUTO Description: CAP CER 1206 1.6NF 25V ULTRA STA	Manufacturers: KEMET	RFQ
	Part#: C1206X162J5HAC7800 Description: CAP CER 1206 1.6NF 50V ULTRA STA	Manufacturers: KEMET	RFQ
	Part#: C1206X162J5HACAUTO Description: CAP CER 1206 1.6NF 50V ULTRA STA	Manufacturers: KEMET	RFQ
	Part#: C1206X162G4HACAUTO Description: CAP CER 1206 1.6NF 16V ULTRA STA	Manufacturers: KEMET	RFQ
	Part#: C1206X162J8HACAUTO Description: CAP CER 1206 1.6NF 10V ULTRA STA	Manufacturers: KEMET	RFQ

Related keywords for C1206X162J3HACAUTO

KEMET C1206X162J3HACAUTO	C1206X162J3HACAUTO distributor	C1206X162J3HACAUTO supplier	C1206X162J3HACAUTO price
C1206X162J3HACAUTO download datasheet	C1206X162J3HACAUTO datasheet	C1206X162J3HACAUTO stock	buy C1206X162J3HACAUTO
KEMET C1206X162J3HACAUTO	Kemet [MIL] C1206X162J3HACAUTO		